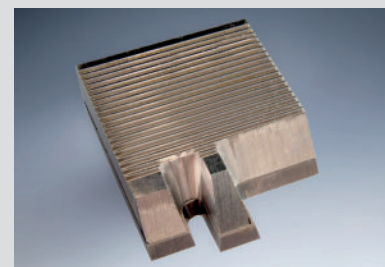


Original WEINIG Carbide Blank Form 2.5 mm with Supporting Plate 7.5 mm



Carbide K-10 for Board Materials

for cutter head type 503, 504, 533, 534, 538, 539

Item no.	Width	Height	Max. profile depth
00.603.750	40 mm	38 mm	–
00.603.751	60 mm	38 mm	–
00.603.752	80 mm	38 mm	–
00.603.753	100 mm	38 mm	–
00.603.754	130 mm	38 mm	–
00.603.755	150 mm	38 mm	–
00.603.756	170 mm	38 mm	–
00.603.757	180 mm	38 mm	–
00.603.758	240 mm	38 mm	–
00.603.759	40 mm	50 mm	12 mm
00.603.760	60 mm	50 mm	12 mm
00.603.761	80 mm	50 mm	12 mm
00.603.762	100 mm	50 mm	12 mm
00.603.763	130 mm	50 mm	12 mm
00.603.764	150 mm	50 mm	12 mm
00.603.765	170 mm	50 mm	12 mm
00.603.766	180 mm	50 mm	12 mm
00.603.767	240 mm	50 mm	12 mm
00.603.768	40 mm	60 mm	22 mm
00.603.769	60 mm	60 mm	22 mm
00.603.770	80 mm	60 mm	22 mm
00.603.771	100 mm	60 mm	22 mm
00.603.772	130 mm	60 mm	22 mm
00.603.773	150 mm	60 mm	22 mm
00.603.774	170 mm	60 mm	22 mm
00.603.775	180 mm	60 mm	22 mm
00.603.776	240 mm	60 mm	22 mm
exclusively for PowerLock moulding cutter head type 539			
00.603.777	40 mm	70 mm	30 mm
00.603.778	60 mm	70 mm	30 mm
00.603.779	80 mm	70 mm	30 mm
00.603.780	100 mm	70 mm	30 mm
00.603.781	130 mm	70 mm	30 mm
00.603.782	150 mm	70 mm	30 mm
00.603.783	170 mm	70 mm	30 mm

Prices and additional dimensions upon request.